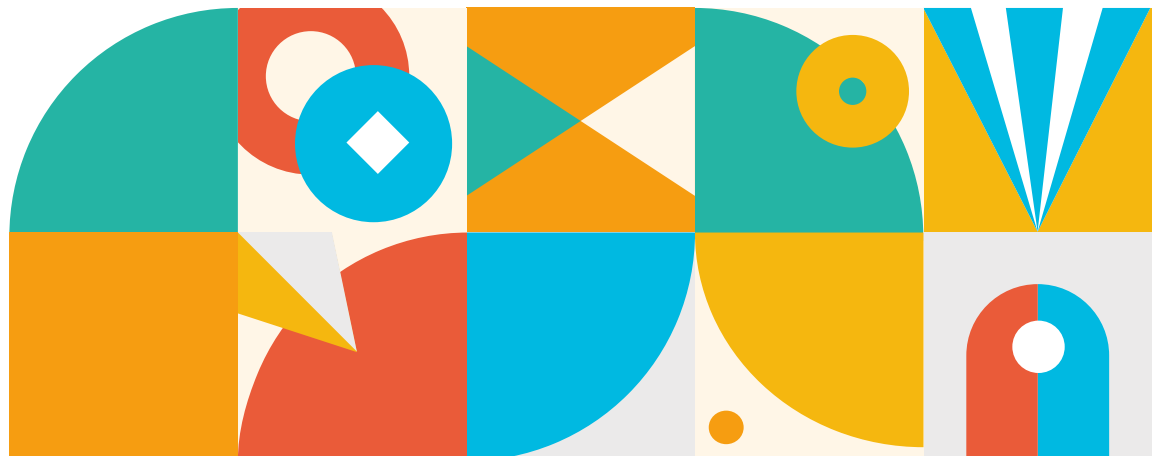




**IV INTERNATIONAL  
CONGRESS CINEICC**

# **Book of Abstracts**

**Innovations in fundamental and  
applied psychological science**



negatively correlated with positive childhood experiences. Poly-victims presented higher levels of depression ( $M= 6.86$ ,  $DP=6.34$ ), [ $F(1, 143)=6.670$ ,  $p=.011$ ] and substance use in family ( $M=.33$ ,  $DP=.47$ ), [ $F(1, 143)=6.72$ ,  $p=.011$ ], and lower levels of positive childhood experiences ( $M= 8.79$ ,  $DP=1.78$ ),

[ $F(1, 143)=6.536$ ,  $p=.012$ ]. Conclusions: These results indicate that childhood experiences are linked to an individual's mental health. Poly-victims show an increased propensity to experience adversity in the family household and more psychopathology. These results corroborate previous studies. Psychological intervention with victims could significantly improve their mental health, diminishing psychopathology levels, through developing adaptive coping strategies.

**Keywords:** Poly-victims; Childhood experiences; Anxiety; Depression; Adults.

### Poster Presentation # 7

**Title:** European Portuguese Version of the Stimulant Relapse Risk Scale (SRRS): Preliminary psychometric characterization

**Authors:**

Joana Andreia Dias<sup>1</sup>, Ana Paula Caetano<sup>1,2</sup>, & Pedro F. S. Rodrigues<sup>3</sup>

**Affiliations:**

<sup>1</sup>IPSS Florinhas do Vouga; Portugal

<sup>2</sup>Serviço Social da FPCE-UC/FCH-UCP; Portugal

<sup>3</sup>Instituto de Desenvolvimento Humano Portucalense – INPP, Universidade Portucalense Infante D. Henrique; Portugal

**Abstract:**

Introduction/Aims: Substance abuse relapse is a global problem and an integral component of the recovery process. Global statistics of substance abuse relapse after treatment are disturbingly high, averaging about 75% over a period of 3 to 6 months after treatment (Appiah, 2017). According to the literature, individuals with substance use disorders have higher negative emotional levels with impairments in emotional regulation, compared to people without substance abuse (Stellern, 2022). In addition, higher frequency and quantity of substance abuse is associated with greater emotional dysregulation, namely in controlling impulsive behaviors (Garke et al., 2021). Therefore, in recent years, relapse prevention in individuals with substance use disorders has been widely studied and related to other dimensions, such as emotional regulation and impulsivity (Garke et al, 2021; Ogai et al., 2006; Wint, 2008). The Stimulating Relapse Risk Scale (SRRS) was developed and validated in Japan (Ogai et al., 2006), based on the Marijuana Craving Questionnaire. The SRRS was created

including a variety of relapse risk, such as craving (expectancy, compulsivity, etc.) and emotionality problems. This study aims to adapt and validate the SRRS for the European Portuguese version.

**Methods:** The SRRS assesses 5 main factors of relapse in substance abuse: (a) compulsiveness, (b) negative experience with drug use, (c) clear intent to use drugs, (d) positive experience with drug use, and (e) emotional problems; these 5 factors are divided into 35 items. Our sample, will be composed about 350 participants, individuals with substance use in treatment or outpatient, from the central region of Portugal. To consolidate the results, the outcomes will also be conduct statistical analyses with the Barratt Impulsivity Scale (BIS-11) and the Emotional Regulation Questionnaire.

**Results:** We expected to perform descriptive analyses, internal consistency, factor analysis and concurrent validity and discuss our results in light of the existing literature.

**Conclusion:** This investigation intends, within a year, to provide a European Portuguese version of the SRRS, a valid instrument to assess the risk of relapse in substance users and a validated tool for health professionals and researchers.

**Keywords:** Substance abuse; Relapse; Emotional regulation; Impulsivity; psychometric characterization.

### **Poster Presentation # 8**

**Title:** Relation between subjective and objective (working) memory in young and older adults

**Authors:**

Ana Babo<sup>1</sup> & Pedro F. S. Rodrigues<sup>2</sup>

**Affiliations:**

<sup>1</sup>Universidade Portucalense Infante D. Henrique; Portugal

<sup>2</sup>Instituto de Desenvolvimento Humano Portucalense, Universidade Portucalense Infante D. Henrique; Portugal

**Abstract:**

**Introduction/Aims:** The relation between autobiographical memory and memory complaints has been widely studied. Results has been inconsistent and explained by several factors (e.g., age, emotional state, nature of the tasks). On other hand, the relation between subjective memory complaints and working memory is sparsely studied. The current work aimed to understand the relation between subjective memory complaints and objective memory tasks, specifically visuospatial tasks and immediate evocation.